



*The Sound of Quality & Trust*

**bellmac**

Paper Machinery • Paper Fabrics • Paper Equipments



## ABOUT US

We Bell Impex Morbi Gujarat (India)

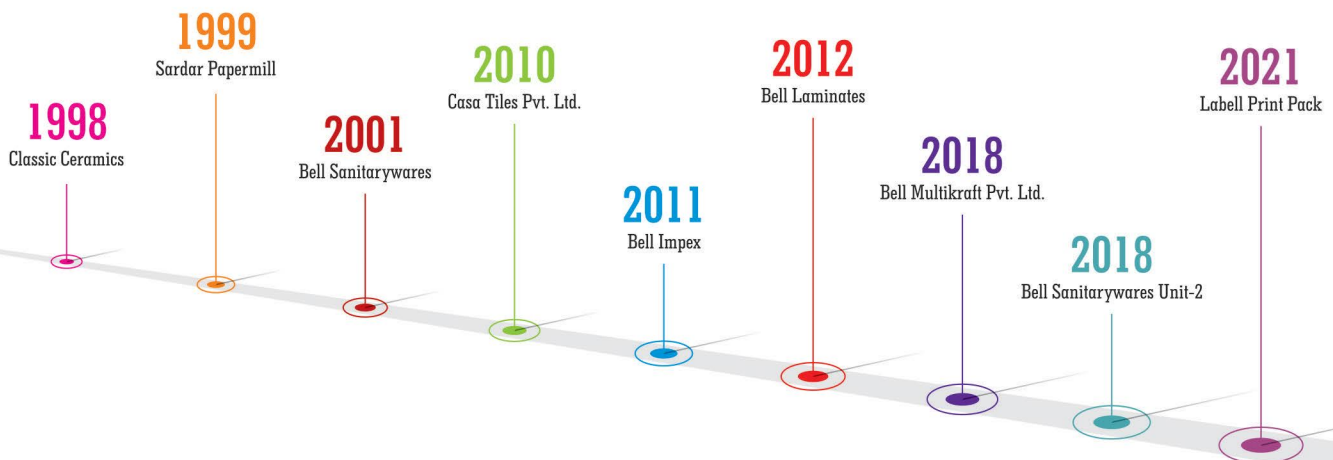
Since 2011 we are Importing and supplying the international quality Paper Mill Plant machinery, Ceramic Plant Machinery, Paper Mill fabric and equipments, Packaging Machinery and other Industrial Products.

Our Company is indulged into paper manufacturing sector since 1999 so we are aware of practical issues/problems that our clients may face. Keeping this in mind we always effort in providing completely approved product with better practical solutions giving successful results with valued services

We have earned this honor and reputation with the support of our esteemed clients who have regularly appreciated the high standard quality equipments that have been successfully catered to their various requirements

Our priority of customer satisfaction will remain our biggest concern forever.

### Our Manufacturing Units



# PAPER MACHINERY

We are dealing in full turnkey project for paper machinery.

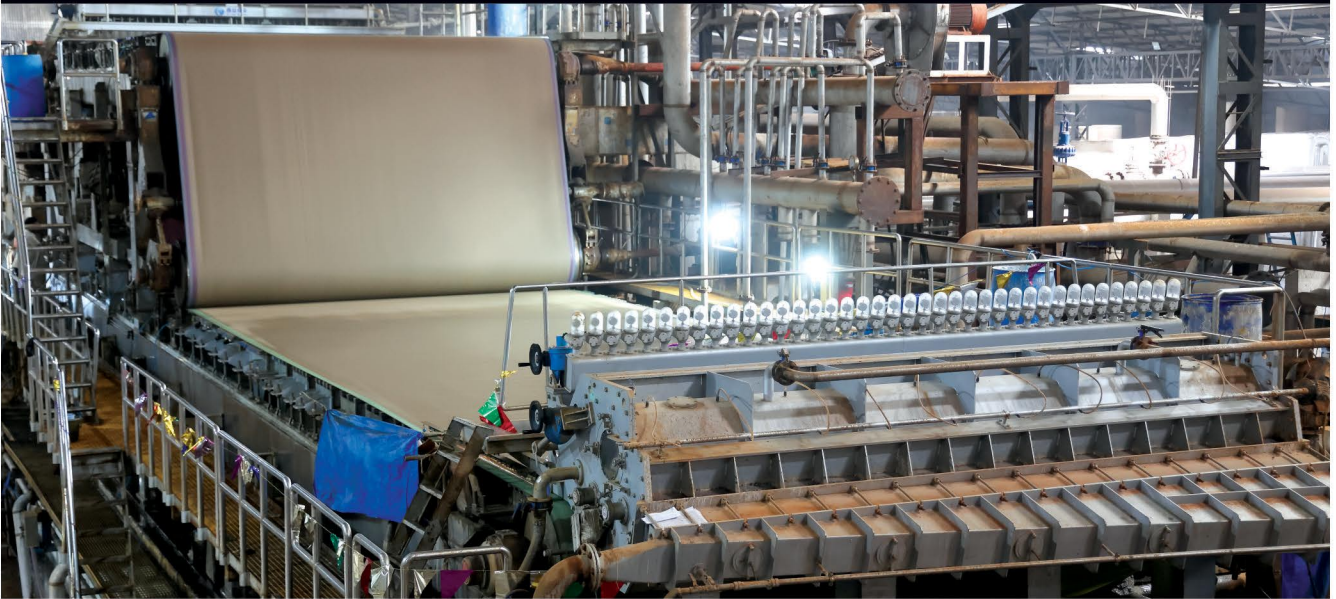
We are offering complete paper mill machines project with up to end solution along with the machines, we also provide comprehensive support services including installation, erection, commissioning and after-sales and spare support services.

## Our offering of machines

- Kraft paper
- Duplex board
- Cultural paper
- Writing & Printing paper
- Tissue paper



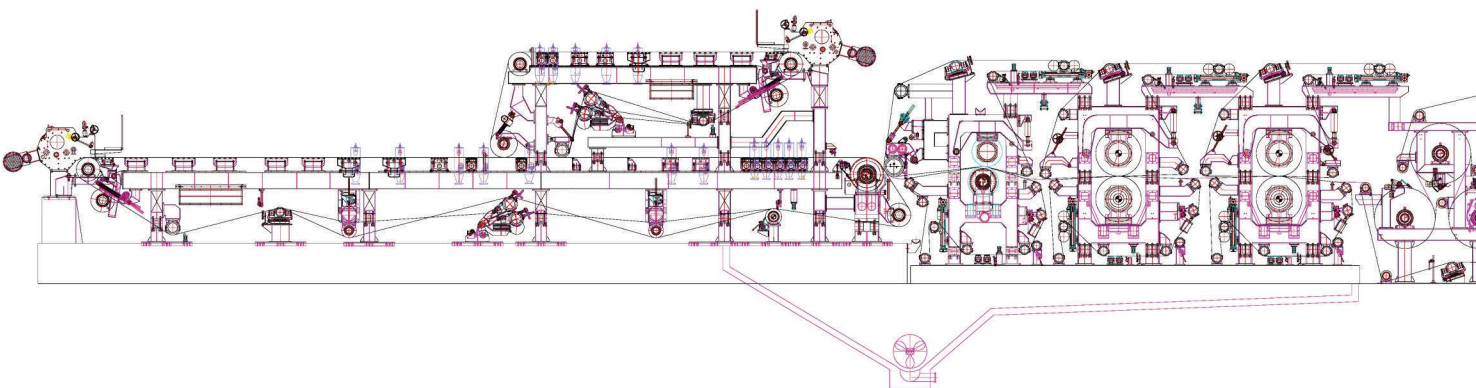
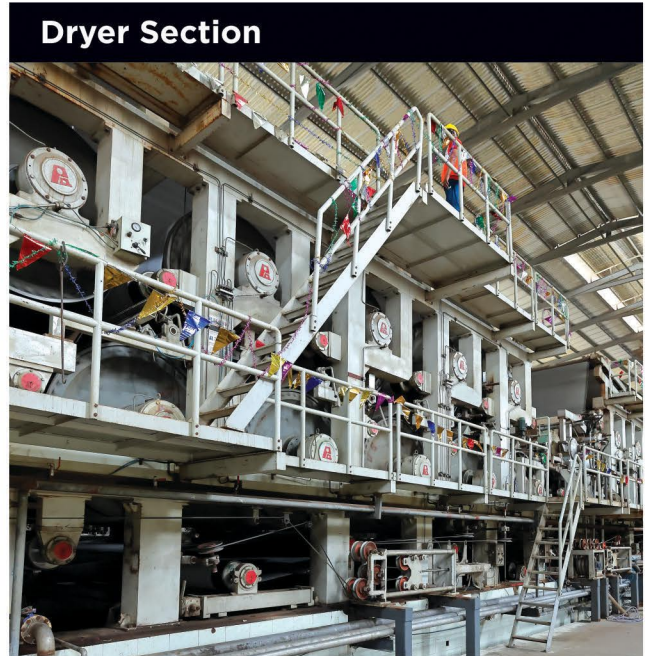
**Wire Section**



**Press Section**



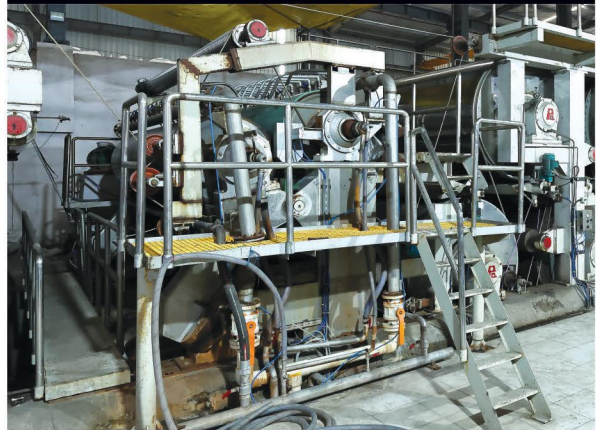
**Dryer Section**



**Coating Machine**



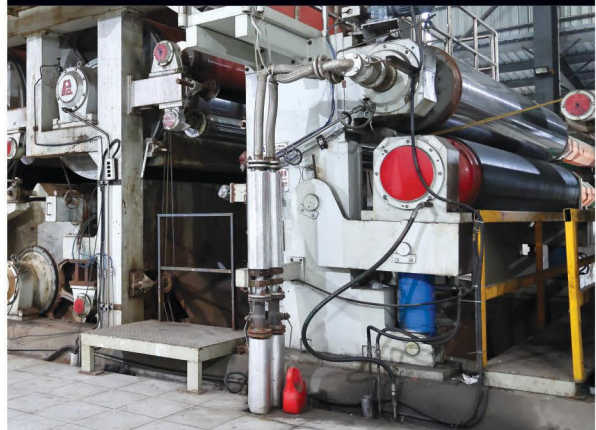
**Surface Sizing**



**Pop Reel**



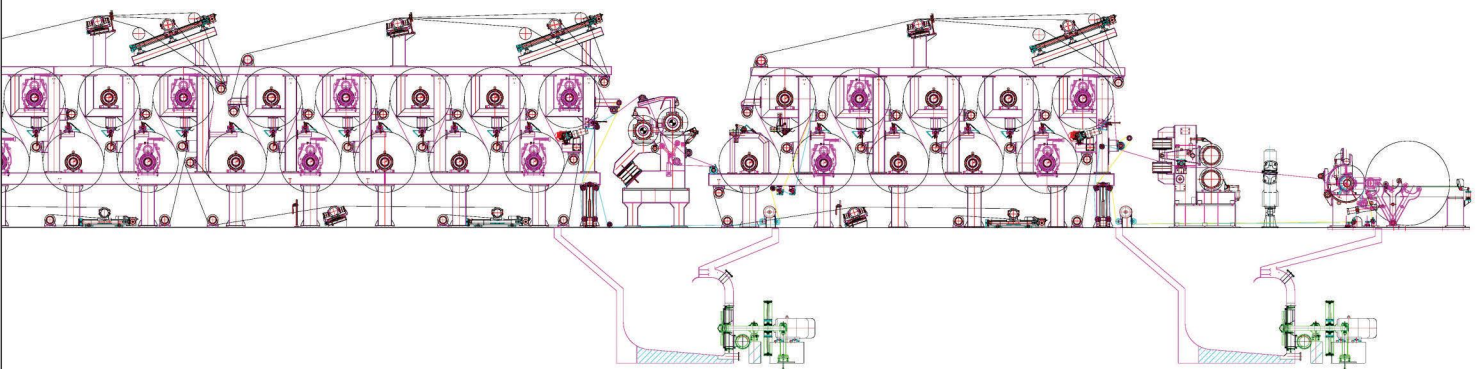
**Calender**



**High Speed Rewinder**



**High Speed Sheet Cutter**



# PULP MILL

We are offering a complete pulp mill machine and equipment according to the customer choice machine and selection of paper raw material

**Conver Machine**



**Bale Breaker**



**Drum Screen**



**M.C. Pressure Screen**



**M.C. Hydrapulper**



**Drum Pulper**



**Cleaner**



**Inflow Pressure Screen**



**Hydrapulper**



# PACKAGING MACHINE

We offer fully automatic and semi-automatic corrugated packaging machine with the choice of 3 ply 5 ply and 7 ply with the maximum width of 32 mm.

**Main Machine**



**Printing Machine**



**Gluer & Folder**



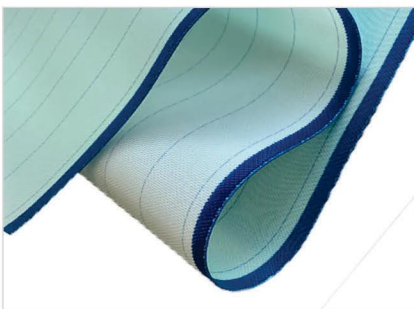
## FORMING WIRE



**1 Layer Forming Wire** Moulding network works according to the weaving series division that can be divided into four mechanised single layer network, eight kind of single layer network. The wire is suitable for making culture paper, printing paper, packing paper.



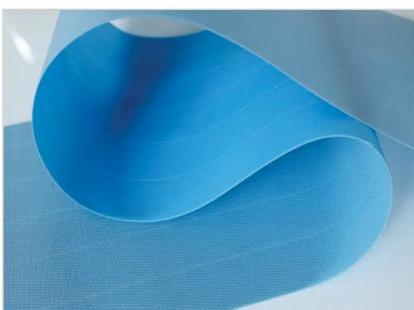
**1.5 Layer Forming Wire** ideally comes with smooth top surface and long durability the yarn technology provides maximum resistance to premature fabric contamination. And it comes with excellent fiber support with good tensile strength. It is suitable for kraft paper with medium to high speed machines.



**2 Layer Forming Wire** is more stable in size due to its warp and weft density is higher which can improve the life of the paper making wire. It is suitable for the medium and high grade cultural paper, kraft paper and thin paper for medium and high speed paper machine.



**2.5 Layer Forming Wire** has low permeability with smooth surface fabrics with high contact area for improved drying. Wire has heat resistance and high temperature resistance quality. It is suitable for printing paper, tissue paper and high speed paper machines, producing various type of kraft paper.

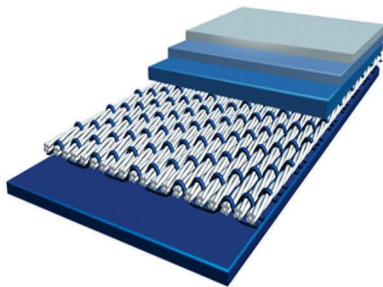


**3 Layer Forming Wire** has good fabric quality with strong dewatering ability, and high vertical and horizontal stiffness due to this it creates a strong running stability for the machine and it gives long service life. It is widely use for high speed machine above 400 RPM.



# PRESS FELT

## Single layer and Double layer BOM felt



### PRODUCT INTRODUCTION

**Product details** : Single layer/ Double layer BOM felt

**Length and width** : User defined

### TECHNICAL PARAMETERS

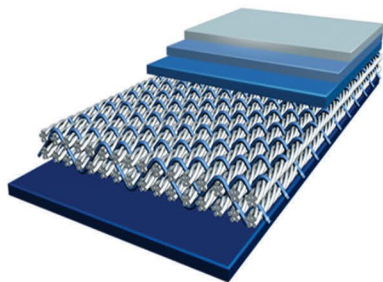
**Felt GSM** : 700 to 1300 GSM

**Structure style** : Single layer & Double layer

**Linear pressure** : Upto 100KN/(M)

**Tensile strength** : Upto 2000N/CM

**Feature** : With the characteristics of flat surface, good compression resistance, strong strength, good dehydration, easy cleaning, long service life, etc.



### TECHNICAL SUPERIORITY

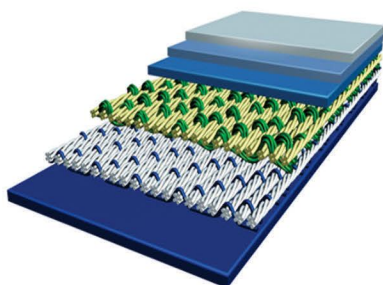
**Paper machine** : All kind of machine

**Speed** : Up to 600 MTR/min

**Paper weight** : 40 To 120 GSM

(**MD elongation** : Less then 1%)

## Laminated Multi-layer BOM felt



### PRODUCT INTRODUCTION

**Product details** : Laminated BOM felt

**Length and width** : User defined

### TECHNICAL PARAMETERS

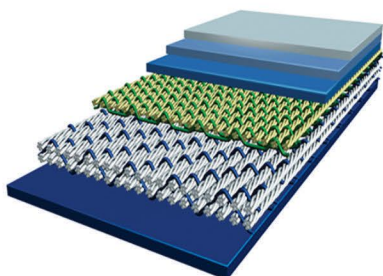
**Felt GSM** : 1200 To 2000 GSM

**Structure style** : Multi Layer Laminated BOM felt

**Linear pressure** : More Then 300KN/(M)

**Tensile strength** : Upto 2000N/CM

**Feature** : The utility model has the advantages of stable structure, superior compressive performance, strong continuous dehydration ability, large strength, flat felt surface, not easy to deform, long service life, etc.



### TECHNICAL SUPERIORITY

**Paper machine** : All kind of machine

**Speed** : Up to 1500 MPM

**Paper weight** : 80 To 300 GSM

(**MD elongation** : Less then 1%)

# DRYER SCREEN

## Spiral Dryer Screen



The Spiral Dryer screen is an important supplemental accessory for the paper machine. Dryer screen is generally used in drying part of the paper machine. Dryer screen comes with different layers of loop: large loop, medium loop, and small loop. And dryer screen is suitable for duplex paper, craft paper, and cultural paper. Spiral Dryer screen is easy to clean and convenient to seam. Compared with other fabric dryer screen, service life is longer. Spiral Dryer screen comes with medium loop and large loop with respective cfm. Medium loop cfm comes with 600 - 1000 and large loop cfm comes with 800 - 1250. Air permeability can meet the needs of efficient drying.

### ADVANTAGES

- Easy to keep clean and convenient to seam.
- Compared with knitted mesh, the wear surface is longer and the service life is longer.
- It is not easy to produce dry net marks, and it is easy to repair when damaged.
- Larger air permeability can meet the needs of efficient drying.
- The special material spiral dry net also has the characteristics of high temperature resistance, high wear resistance, and aging resistance.



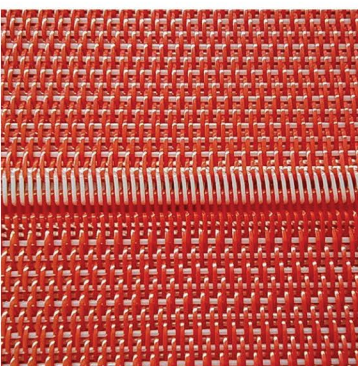
## Single Warp Flat Filament Dryer Screen



The Single warp flat filament dryer screen is used in paper making, non-woven fabrics, and other industries. Screen tensile strength is high and mesh surface is flat, and the air permeability is good and screen running performance is stable. It is suitable for the cultural paper, special paper, and packaging paper machines.

### ADVANTAGES

- It has acid resistance, alkali resistance, abrasion resistance, high temperature resistance, and long service life.
- The mesh surface is flat, the tensile strength is high, and the air permeability is good.
- In terms of installation, the interface has no trace, and the interface strength can reach 100% of the normal network.
- The mesh surface is flat and the running performance is stable.



## VACUUM PUMP



2BEC series water ring vacuum pump is used for drawing air or other corrosive, insoluble gases which do not contain solid grain to obtain certain vacuum and pressure in sealed vessels, the stacked in may be allowed to contain small amount liquid. The pump operating scope recommended is  $-0.04\text{MPa} \sim -0.09\text{MPa}$ .

During the operation, the gas is compressed is thermally, when compress or extract, corrosive or explosive gases, danger will not occurs.

This pump set are widely used in paper making, coal mine, power plant, vacuum filtration, chemical industry, petrochemical industry, food processing and other industries.

The product has characteristics of high reliability, high efficiency , energy saving, suitable for forcing load.

### Available Pump Size

2BEC40	2BEC62
2BEC42	2BEC67
2BEC50	2BEC72
2BEC52	2BEC82
2BEC60	2BEC100

# PULP PUMP



## PRODUCT OVERVIEW

The non-block and non-leaked pulp pump is suitable for pumping a variety of different media as it is single stage, single flow, volute centrifugal pump. This series has various models so that it can meet the requirements of operating conditions with the best performance and easy to maintain. If removing or installing the impeller, wear-resisting lining, pump cover, shaft seal and bearing frame, don't remove the pump neither from the suction pipe nor the output pipe due to its process design. With two wear-resisting linings of front and back, it provides the sufficient protection for pump body and pump cover to prolong its service life. To offer high efficiency, it opens the three-blade impeller.

## PURPOSE

This product is widely used in pulp manufacturing, sugar refining, chemical raw materials. Industrial wastewater Environmental protection engineering and municipal road engineering.

## WORKING CONDITIONS

**Speed:** 750, 990, 1480 and 2960r/min

**Voltage:** 380, 6Kv or 10Kv

**Inlet and outlet diameter:** 65-500mm (Flange size GB/T1724.1.6-1998)

**Flow rate:** 20-3300m<sup>3</sup>/h

**Head scope:** 5-100m

**Operating temperature:** the highest tempera 120°C

**The maximum working pressure:** 1.0MPa or 1.6MPa, special configuration can reach 1.6MPa or 2.5MPa

**The medium:** concentration < 6%

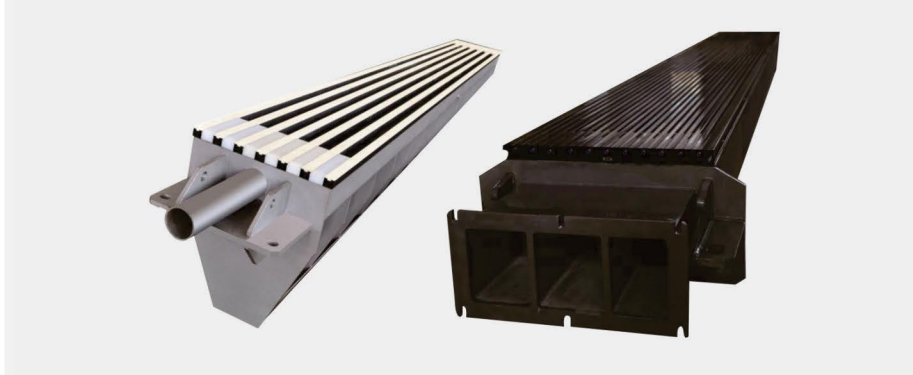
All pumps are full SS body

All pumps come with motor and foundation stand

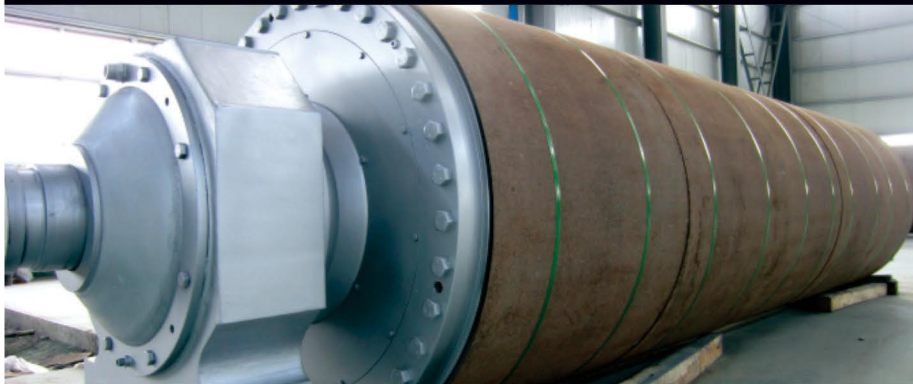
All pumps spare available separately

## OTHER EQUIPMENTS

**Ceramic Vacuum Box**



**Press Roll**



**Dryer Cylinder**



**Crown Controllable Multizone Calender**

**Fumigation Sizing Machine**

**Steam Conditioning System**

## OTHER EQUIPEMENTS

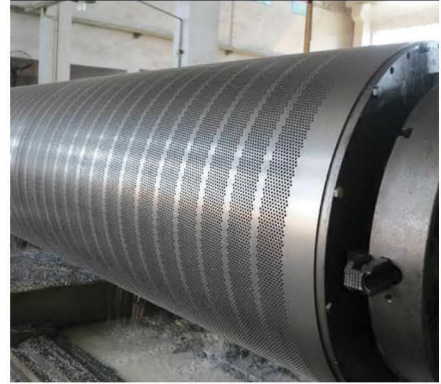
**Air Cushioning Headbox**



**Low & High Pressure Shower**



**Suction Roller**



**Air Bellow**



**TDR Ring**



**Screen Basket**



**Universal Joint**



**Doctor Blade**



**V. Belt**



## OUR SERVICES



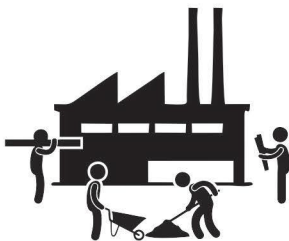
### EXPERT PROJECT PLANNING AND DESIGNING

Our team of experts closely works with the clients to understand their specific requirements and provide project planning and designing with optimization of power and water consumption to reduce the overall operational cost. We provide a detailed breakdown of the project cost, including the cost of machinery, equipment, so that the client gets the best value for their investment.



### INSPECTION OF MACHINE & DELIVERY SCHEDULE

Our quality check team assure that each and every part of the machine is minutely check and after the assurance we approve it for delivery of the machine to the customer



### ERECTION & COMMISSIONING

Our team of experts ensures the installation and commissioning of the paper plant in such a way that it ensures maximum efficiency and productivity. We also provide training to the client's staff for the seamless operation of the plant.



### RENOVATION AND EXPANSION

Our company understands that industries constantly evolve and require new and innovative solutions to stay competitive. That's why we offer the facility for customers to add on spare or new machine parts to their existing systems, which can help extend growth and innovation in the industry.



### AFTER SALES SUPPORT

We take pride in offering excellent customer service, which includes lifetime support after sale. Our commitment to our customers also extends to providing spare parts at a reasonable rate, ensuring that their investment continues to be valuable for years to come.

# BEARINGS

PREMIUM & HIGH PERFORMANCE BEARING FOR PAPER INDUSTRIES



## Bearing Type



Spherical Roller Bearing



Ball Bearing



Stainless Steel Bearing



Tapered Roller Bearing



Bearing Units & Inserts



One Way Clutch Bearing



Cylindrical Roller Bearing



Adapter Sleeve



At. Shakti Industrial Estate, Nr. Radhe Hotel,  
At. Trajpar, Morbi-363642 (Guj.) INDIA  
**Mo. :** +91 99250 22830 / +91 95122 42000  
**E-mail :** info@bellimpex.com  
**Web :** bellimpex.com