



The Sound of Quality & Trust

Importer of Ceramic Tools, Plant Machineries & Equipments



ABOUT US...

We Bell Impex are one of the leading importer and supplier of international quality ceramic polishing & squaring tools, grinding media products & ceramic plant machinery, industrial timing belts, Paper Mill Plant machinery & equipments and other Industrial Products.

Our Company is indulged into ceramic and paper manufacturing sector since 1995, so we are aware of practical issues/problems that our clients may face. Keeping this in mind we always effort in providing completely approved product with better practical solutions giving successful results with valued services.

We have earned this honor and reputation with the support of our esteemed clients that have regularly appreciated the high standard quality equipments that have been successfully catered to their various requirements.

Our priority of customer satisfaction will remain our biggest concern forever.





珠海市巨海科技有限公司
ZHUHAI JUHAI TECHNOLOGY CO.,LTD



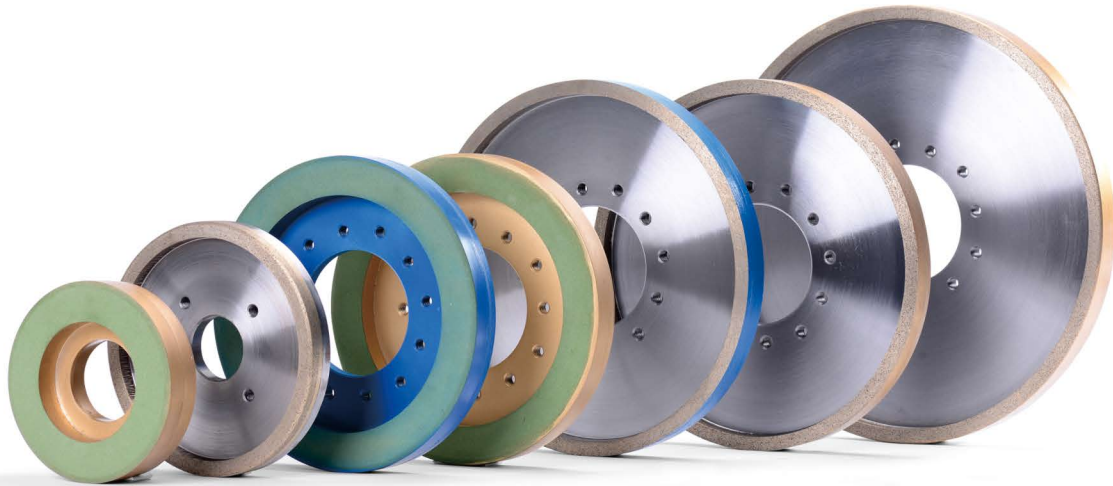
**Focus on super-hard material for 25 years,
a leading International manufacturer of super-hard materials**

Zhuhai Juhai Technology Co. Ltd. is the wholly-owned subsidiaries of Guangdong Juxin New Material Technology Co., Ltd. High-tech enterprises, the company were established in 1996 , Branch member of China Machine Tool Industry Association Super-hard Materials The leading products of the company include the resin, Metal, Ceramic bond artificial diamond abrasive and CBN abrasive research, development, production and sales. The products mainly used for water-free ceramic glazed tiles (tiles, antique glazed tiles), in addition, processing all full glaze and polished tiles products.

Annual output of various type of super-hard materials exceeds three million, the quality of some products have reached the international leading level and exported to many countries and regions.

DRY SIZING WHEEL SERIES

This series of products are mainly used for wall & floor tiles dry water absorption of 6~20% grinding edge trimming.



WET SIZING WHEEL SERIES

This series of products are mainly used for grinding, trimming and processing of polishing glazed vitrified tiles and diamond glazed vitrified tiles and other low water absorption ceramic tiles.



DRY SIZING WHEEL SERIES FOR PARKING & PORCELAIN TILES

This series of products (JHFG) are mainly used for dry grinding and trimming of Parking and Porcelain tiles with water absorption rate of 0.3~6%.



ABRASIVE

Juhai Abrasive comes with High sharpness, stable cutting force with long service life and luminous stability. It's suitable for Slab Tiles, Full Body Tiles, High-Gloss Tiles, PGVT Tiles, and Matt Tiles.



SLAB TILES ABRASIVE



HIGH GLOSS ABRASIVE



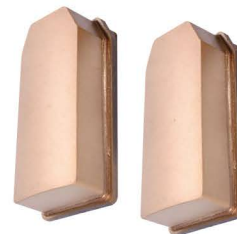
PGVT ABRASIVE



MICRO ABRASIVE



DIAMOND ABRASIVE



RESIN ABRASIVE



BLACK ABRASIVE



HELICAL ABRASIVE



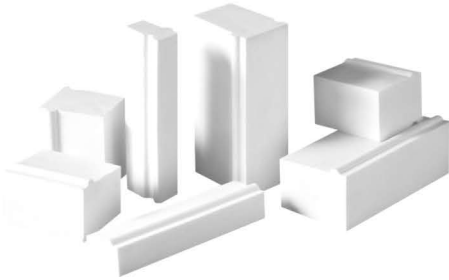
BRUSH ABRASIVE



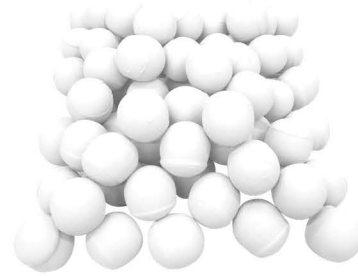
FIBER ABRASIVE

ALUMINA PRODUCTS

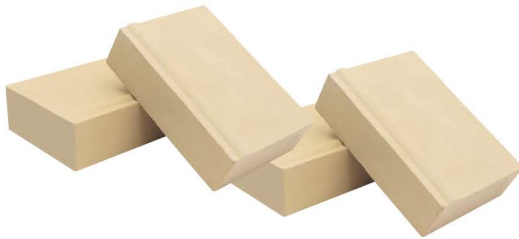
Alumina grinding media with the characteristic of high density, high hardness, and low wear loss. It is the most ideal grinding media for body, glaze and various mineral powder processing units.



92% ALUMINA BRICKS



92% ALUMINA BALLS



68% ALUMINA BRICKS



68% ALUMINA BALLS

ITEM	92% Al ₂ O ₃	75% Al ₂ O ₃	68% Al ₂ O ₃
Al ₂ O ₃	≥ 92	≥ 75	≥ 68
Bulk Density (g/cm ³)	≥ 3.63	≥ 3.33	≥ 3
Water Absorption (%)	< 0.01	< 0.01	< 0.01
Wear Loss (%)	≤ 0.12	≤ 0.18	≤ 0.3
Hardness (Mohs)	9	8.5	7-8
Color	White	White Beige	Beige
Application	Glaze Milling Tile Body Milling	Glaze Milling or Tile Body Milling	Tile Body Milling
Raw Material	Calcined Alumina	Calcined Alumina	Refined Bauxite Powder
Diameter (mm)	25~60	30,40,50,60,70	



Foshan Fengli Industrial Belt Co. Ltd.

More than 15 years, with excellent quality and perfect service, Foshan Fengli Industrial Belt Co. Ltd. achieved many honors. For many years Fengli has been rated as civilization enterprise, contract-honoring and trust worthy enterprise, China top 10 creativity brand enterprise, etc.



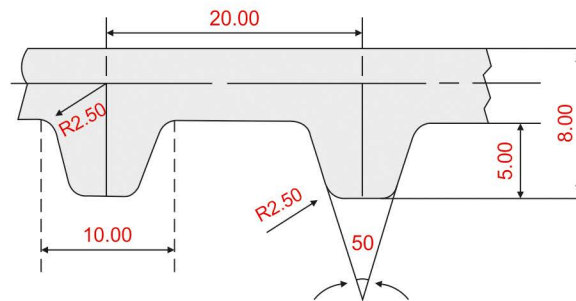
PU & RUBBER TIMING BELT

ENDLESS TIMING BELT AT20

The truly endless timing belts are made by imported thermoplastic polyurethane material and the continual force encirclement steel wires. The product technology has met the international technical standard. Higher precision, the timing belts are more suitable for the high speed transmission and high loaded transmission.

Available Sizes

- 50AT20
- 60AT20
- 75AT20
- 100AT20
- 150AT20



Technical Parameter

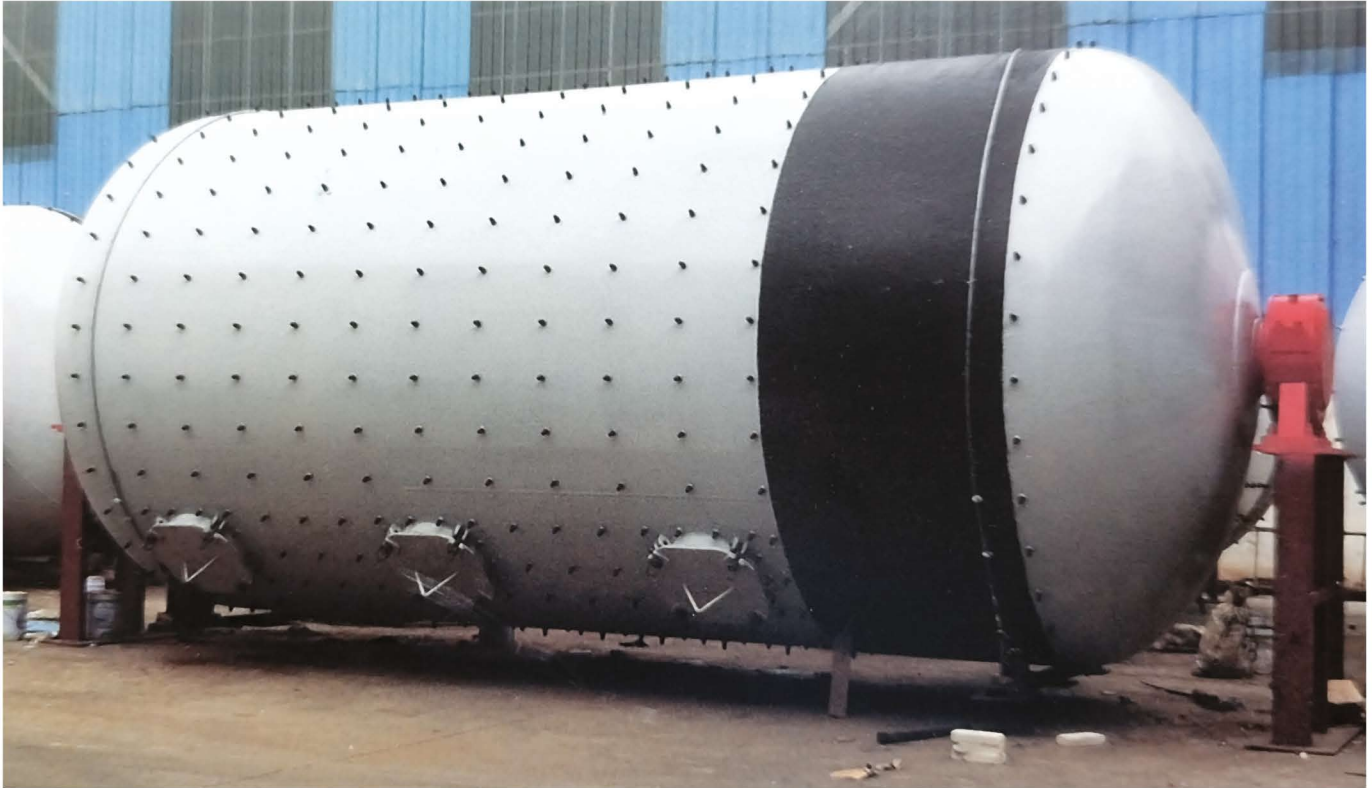
Code	Thickness (mm)	Width (mm)	Diagonal (mm)
AT20	8.0±.2	+0.00 -0.20	≤0.3

Structure (mm)	Size (mm)	Tolerance (mm)	Breaking >N	Number of Shares
7*7	φ1.2	1.15-1.25	960	50mm/23 75mm/36 100mm/47 150mm/74

CERAMIC MACHINERY

We Bell Impex are experts in supplying High technology and international quality standard of ceramic machinery with valued service.

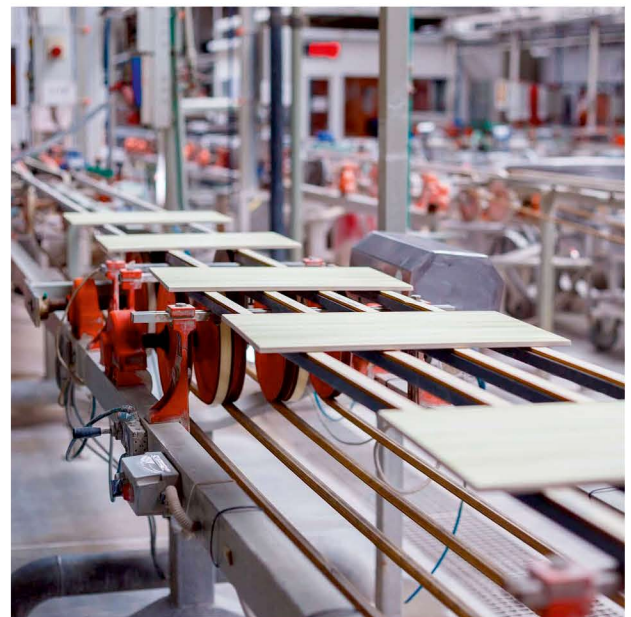
We also maintain spare part inventory at basic price for our valued customer.



BALL MILL



PISTON PUMP



GLAZE LINE

EQUIPMENTS FOR CERAMIC MACHINERY



BELL FLOW



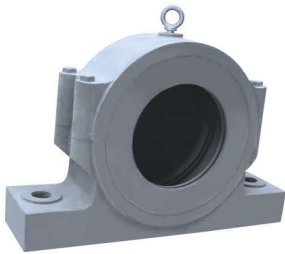
KILN BURNER



BURNER TUBE



BALL MILL GEARBOX



PEDESTAL



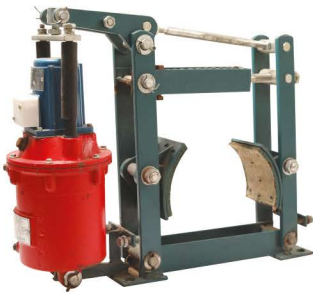
GEAR WHEEL



GEAR SHAFT



BELT PULLY



BALL MILL BREAK



COUPLE



CERAMIC PISTON



RUBBER RING



AIR PRESSURE VALVE



OIL PUMP



DIAMOND CHAMFERING



SILICON CHAMFERING

FELDSPAR MACHINERY



CONTINUOUS BALL MILL



RING MAGNET



FILTER PRESS



CHAMBER MAGNET



DRY PROCESS CONTINUOUS BALL MILL

EQUIPMENTS FOR FELDSPAR MACHINERY



HYDROCYCLONE



INLET CYLINDER



FILTER CERAMIC PLATE



CONICAL RUBBER



HORIZONTAL PUMP



IMPELLER



IMPELLER RUBBER



COVER PLATE LINER



ACID PUMP



VACUUM PUMP



FRICTION RING



DIODE



BUTTERFLY VALVE



FILTER CORE



FILTER BLADE



ELECTRIC CARD

BEARINGS

PREMIUM & HIGH PERFORMANCE BEARING FOR CERAMIC & PAPER INDUSTRIES



BEARING TYPE



Spherical Roller Bearing



Ball Bearing



Stainless Steel Bearing



Tapered Roller Bearing



Bearing Units & Inserts



One Way Clutch Bearing



Cylindrical Roller Bearing



Adapter Sleeve



At. Shakti Industrial Estate, Nr. Radhe Hotel,
At. Trajpar, Morbi-363642 (Guj.) INDIA
Mo.: +91 99250 22830
E-mail : info@bellimpex.com
Web : bellimpex.com